

# CERTIFICATE OF LOCATION OF GOVERNMENT CORNER

NORTH QUARTER Corner of Section 13, Township 107, Range 39, 5TH P.M.

STATE OF MINNESOTA, County of MURRAY

At the corner location shown on the sketch:

☒ On 4/3/2025 found a 1/2" iron  
DATE

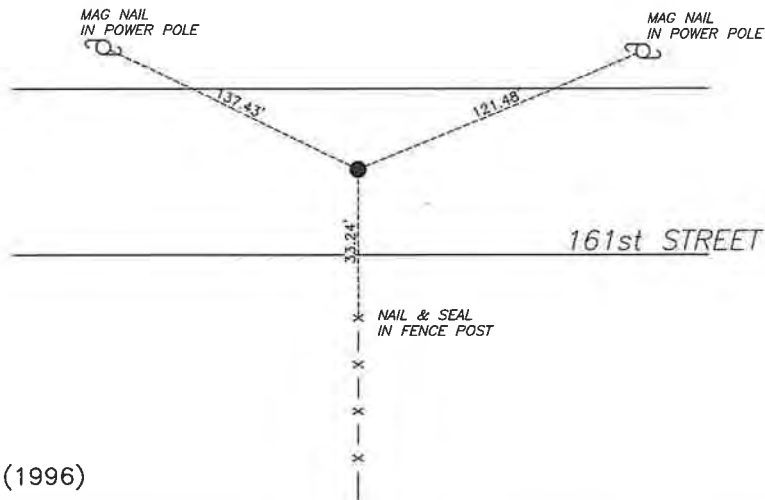
☒ left monument as found, ☐ lowered monument, ☐ removed monument (explain)

☐ On \_\_\_\_\_ placed a \_\_\_\_\_  
DATE

## SKETCH OF REFERENCE TIES



MONUMENTS FOUND



Murray County  
Coordinate System NAD83 (1996)

N: 184644.340  
E: 577364.803

WGS84  
LAT: 44°04'47.4787"  
LON: -95°28'20.2429"

Statement of evidence relative to this corner location is on back of page.

I hereby certify that this document and the data contained herein was prepared by me or under my direct supervision.

Daniel L. Bueltel  
License No. 43844

6/19/2025  
DATE

JUN 27 2025

MURRAY COUNTY RECORDER

Statement of Evidence

NORTH QUARTER CORNER SECTION 13, T107N, R39W OF THE 5th P.M.

In July of 1861, J.W. Myers surveyed the township lines.

In September of 1861, L. Brockmann subdivided the township.

A survey by M.E. Koopman from 1954 notes an iron stake in center of grade for the corner.

County records dated November 15, 2002 show Zieske Land Surveying located an iron monument at the corner.

On August 27, 2020 Westwood Professional Services located a  $\frac{1}{2}$ " iron without a cap.

On April 3, 2025 Bueltel-Moseng Land Surveying found a  $\frac{1}{2}$ " iron at the corner.